



Hello SnoPals

The season is getting closer and the SnoPals are getting ready.

2019-2020 memberships

All memberships expiry on the 1st of December. If you purchased a 1 yr membership you are due for renewal.

Please support the SnoPals and get your membership for the upcoming season soon.

You can get your membership from any Executive member or go to our website EASTMANSNOPALS.CA and go to the membership page and you can order and pay for it with PAYPAL and your membership card will arrive in the mail.

Consent for SnoRider's West Magazine & SnoMan & SNOPALS Newsletter

The below noted person hereby consents to disclosing my personal information contained on this document to SNOMAN and SnoPals and acknowledge that SNOMAN & SnoPals intends to use this information for the purpose of providing it to SnoMan magazine and to send the SnoMan & SnoPals newsletters and club information.

	INDIVIDUAL	FAMILY
_____ 1 yr	\$20	\$30
_____ 2 yr	\$40	\$60
_____ 3 yr	\$60	\$90

EASTMAN SNOPALS Inc.

NAME: _____

MAILING ADDRESS: _____

EMAIL ADDRESS: _____

009 (Snowmobilers) Expires December 1st _____

MEMBERSHIP CARD

SNOMAN INC. & EASTMAN SNOPALS INC.

Name _____

This card entitles you to SnoMan Member Benefits as listed on www.snowman.mb.ca

009 Welcome to Our World Expires December 1st _____

NAME: _____
ADDRESS: _____
PHONE: _____
 I WANT TO RECEIVE SNOMAN E-NEWSLETTER
License # LGCA _____
Ticket # _____

SNOMAN
2121 Henderson Highway
Winnipeg, MB R2G 1P8

WINNER'S CHOICE RAFFLE
One Grand Prize
Choose One of these 2020 Sleds

Arctic Cat Lynx 2000 Retail Price \$8,895.00	Ski-Doo MXZ Carb 600 Retail Price \$8,899.00	Polaris 600 Switchback Pro-S Retail Price \$13,699.00	Yamaha 600 Transporter Retail Price \$14,499.00
---	---	--	--

Winner may choose to accept \$10,000.00 cash in lieu of one chosen snowmobile.
* Winner is responsible for pick up of selected sled. Snoman will be responsible for GST. Winner will be responsible for all other applicable taxes, including PST.*

ARCTIC CAT **ski-doo** **POLARIS** **YAMAHA**
The Way Out.

Draw Date: February 20, 2020 at 2:00 pm
Location: Snoman Office - 2121 Henderson Hwy - Winnipeg, MB
Prize must be claimed within 30 days. Every ticket holder has the right to witness the draw.

License # LGCA 2789-RF-32018 35,000 Tickets Printed **Tickets \$2.00 each** Ticket # **11301**

Our club will be selling **WINNERS CHOICE** raffle tickets again this year. You could win your choice of a new

Arctic Cat Lynx 2000

SkiDoo MXZ 600 carb

Polaris 600 Switchback

Yamaha 600 Transporter

or take \$10,000 in cash.

Tickets are \$2 each.

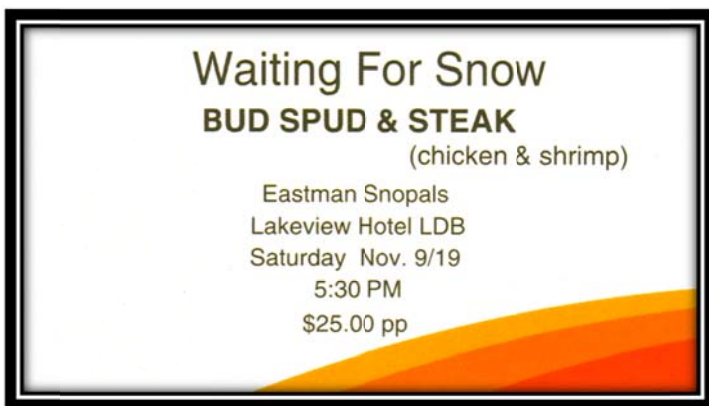
**We will be selling them at the
Lac du Bonnet Christmas Craft show on
November 16th.**

If you think you could sell at book at your office / group please reply to this email and we will get you a book.

Our 50/50 draw at the Tourist Hotel in Seven Sisters has continued for a year.

We run our ticket sales in conjunction with the Community Club's CHASE THE ACE draw from 5-7p.m.

Come out and support the SnoPals.



[Get your tickets for the SnoPALS](#)

[“waiting for snow”](#)

[Bud Spud & Steak](#)

[Saturday November 9th at 5:30p.m.](#)

[Hosted at the Lakeview Hotel in Lac du Bonnet](#)

Thursday

October 10th

Tourist Hotel, Seven Sisters

6pm option dinner social hour

7:00 p.m. – Regular General Meeting

EASTMAN SNOPALS Inc.

Snowmobile Shelter Development Project



The Eastman SnoPals Inc. have been grooming trails and maintaining shelters in the region since 1996. We groom in excess of 325 km of trails weekly throughout the snowmobile season which attracts riders from all over the province to spend a day or weekend riding.

It is estimated that the economic spin off in the province of Manitoba is \$300 million annually. It is not difficult to see the local spin off when you drive around Lac du Bonnet, Pinawa, Whitemouth, Elma or Seven Sisters on a winter weekend and see the parking lots full of snowmobiles with their riders in the restaurants, service stations and stores. A trail counter indicates that on average this winter, 1000 snowmobiles travelled between Lac du Bonnet and the Pinawa Channel each week.

The SnoPals maintain 5 shelters throughout the region.

- Kings Kookout on trail 768 between Lac du Bonnet and Pinawa
- 3s Company Hut on trail 21 north of Elma
- Ridge Riders on trail 62 south of Molson
- Halfway Hut on trail 760 south west of Lac du Bonnet
- Agassiz Hut on trail 763 south of Milner Ridge

All of our shelters are in excess of 20 years old and are showing their age.

As part of our Club's Strategic Planning, it is now time to start to develop a program to replace our shelter at KINGS KOOKOUT.

The replacement of this shelter in its remote location and constructed in the winter is a monumental task for a volunteer-based club.

We have not finalized our design yet, but we envision that a replacement shelter would be a 24' x 24' (576 sq ft) building with covered deck, with insulated floor, walls and ceiling.

The structure would have solar lighting, a woodstove and would be set up with a large seating area, storage cabinets, counter space, tables and chairs.

Our Shelter Development Program will be accomplished with a combination of volunteer sweat equity by club members, internal financial contribution from our operating budget with additional financial contributions from municipal governments, corporate sponsors, community members and club members.




DRAFT DESIGN

The SnoPALS have started our Kings Kookout Legacy Project.

This project will work toward replacing the shelter at Kings Kookout on trail 768.

This is a very big project for our club and we will need the full support of the community to achieve our goal.

If you would like to make a donation on behalf of yourself or your company please contact our club at any time to work out the details.



EASTMAN SNOPALS
 BOX 1167
 LAC DU BONNET MB R0E 1A0

EASTMAN SNOPALS
Welcome to Our World

EXPRESION OF INTEREST

The Eastman SnoPALS Inc are looking to receive interest from companies and private individuals for the following service:

- **Parking of our trail groomer (and drag if room allows) in a heated shop with floor drain between Friday afternoon to Monday morning**
 (minimum 24 hours - days and times are flexible)
- Approximately January 1st 2020 to March 31st 2020 (3 months)
- Groomer and drag will be parked in the heated space to warm up to allow access to areas under the machine that must be free from built up snow and ice to facilitate regular servicing of the unit.
- Access to the facility for club personnel to perform routine maintenance on the unit
- Minimum door size required: 10' x 10'
 Minimum shop size required: 14' x 20'
- Eastman SnoPals will supply all tools and if necessary, lumber for floor protection from metal track cleats
- Unit is insured and carries 3rd party liability
- All club members are insured for 3rd party liability
- All club members are covered by WCB.
- Any and all damage to private property will be the responsibility of Eastman SnoPals.
- Payment would be determined on a per event rate

Any interested parties willing to discuss this proposal or ask questions are asked to contact Club President John Fleming at the address below

BOX 1167 • LAC DU BONNET MB • R0E 1A0
 • EMAIL: eastman_snopals@mtsmail.ca
 204-451-0481

Legacy Program

This is a LEGACY PROGRAM where your support provided to the SnoPals will be showcased on plaques within the new shelter forever and will be listed on our website.

Support will be in levels based on contribution:


PLATINUM contribution	\$2000 +
DIAMOND contribution	\$1000 - \$1999
GOLD contribution	\$500 - \$999
SILVER contribution	\$250 - \$499
BRONZE contribution	\$100 - \$249

Contributions would be considered in cash or the value of donated construction materials or equipment.

We believe that this will be a multi-year project for our club and our commitment to you is that for some reason we are not able to proceed with this project by 2022 we would refund your donation in full.

If you are interested to participate in this Legacy Program, you are encouraged to contact me at any time to discuss your donation or you may make a donation by mail on the form below.

Regards
 John Fleming,
 Eastman SnoPals President
 P.O. Box 1167
 Lac du Bonnet, MB R0E 1A0
eastmansnopals@mtsmail.ca
 (204) 451-0481



DRAFT DESIGN

King's Kookout Shelter Project

I would like to make a donation to the KINGS KOOKOUT SHELTER PROJECT

I would like to donate at the following level:

Platinum \$2,000 + _____

Diamond \$1,000 - \$1999 _____

Gold \$500 - \$999 _____

Silver \$250 - \$499 _____

Bronze \$100 - \$249 _____

NAME: _____ Please make

The SnoPALS are also looking to obtain any EXPRESSIONS OF INTEREST from anyone or business who would like to submit a quote for the parking of 1 of our groomers in a warm facility for a 24 hr period over the weekend to allow the unit to warm up and be serviced.

If you have any questions or would like to discuss this project further please contact me at any time.

Regards

John Fleming

President – Eastman SnoPals Inc.

(204) 451-0481